

## Collimator lens for LED / Narrow beam model

Model : AS-NARROW

Application with LED :

- General Lighting with White LED
- Lighting control with PIR
- Home security lighting
- Torches
- Display lighting

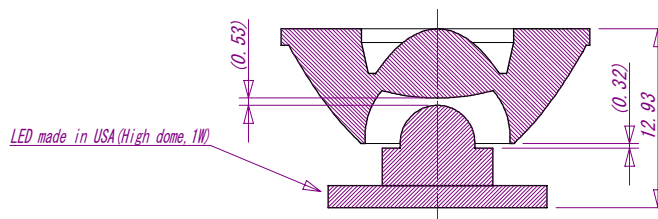
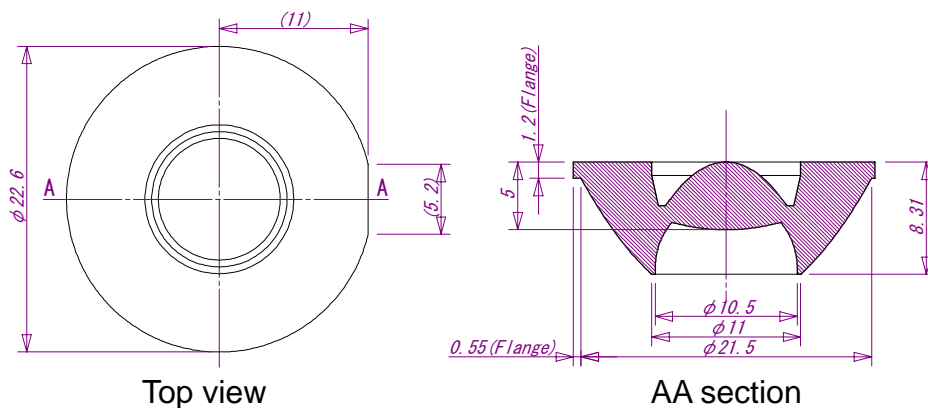


Material : PMMA (Acrylic)

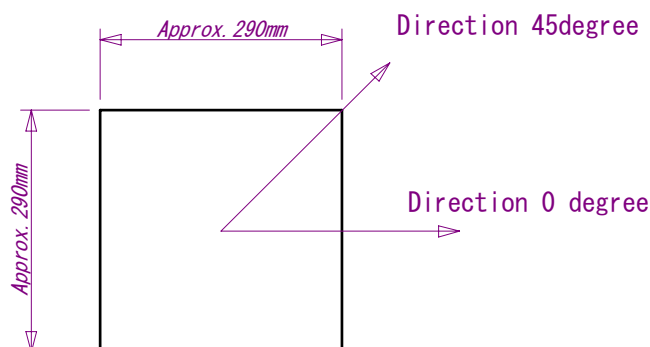
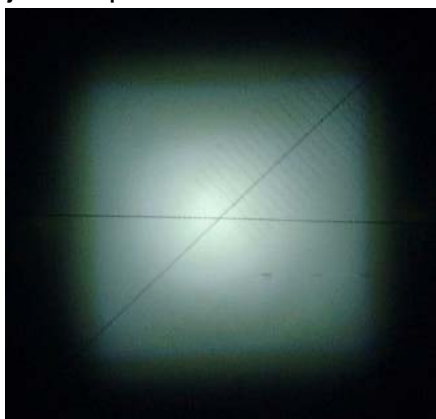
Features :

- 2 times higher illumination than current collimator lens
- Low aberration by taking reflective optics. Suits for white LED.
- 8.31mm low profile design

Appearance and Dimensions :



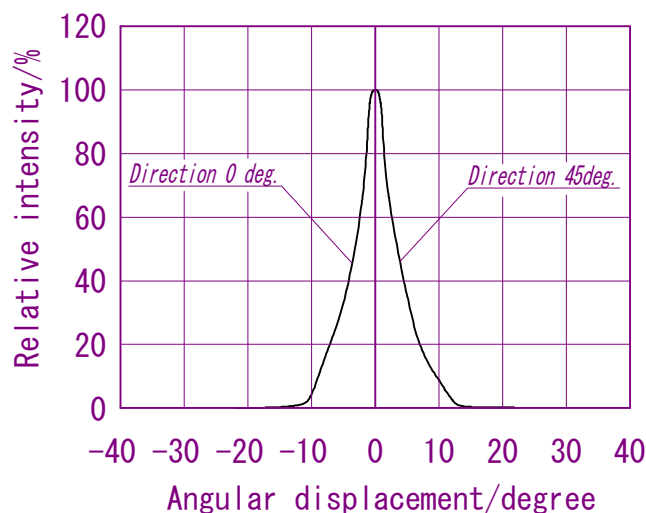
## Projection picture



Projected size at 1m distance

- Max. illumination : Approx.1,100Lx (at 1m distance)

## Representative spatial radiation pattern



## Precaution :

- Above projected size and radiation pattern are gained with “white power LED \*”. They are representative and no guaranteed value.  
\* --- White LED made in USA (High dome, 1W, rating current)
- There are variations of illumination due to the variations of setting, LED model, tolerance of dimension and so on. Careful evaluation is needed at mechanical design.
- Enough heat emission shall be considered when high power LED is applied.